



Enterprise Reporting Solution

Argos 6.9 Release Guide

Product version 6.9

Last updated 7/7/2022

Trademark, Publishing Statement, and Copyright Notice

© 1998-2022 Evisions. All rights reserved.

This software and related documentation are provided under a license agreement containing restrictions on use and disclosure and are protected by intellectual property laws. No part of this document may be reproduced, stored in or introduced into a retrieval system, or transmitted in any form or by any means (electronic, mechanical, photocopying, recording, or otherwise), or for any purpose, without the express written permission of Evisions.

The information contained herein is subject to change without notice and is not warranted to be error-free. Product features referenced herein for a period of time may not match product contents. Evisions does not warrant that the functions contained in the software will meet your requirements or that the operation of the software will be uninterrupted or error free. Evisions reserves the right to make changes and/or improvements in the software without notice at any time.

This software and documentation may provide access to or information on content, products, and services from third parties. Evisions and its affiliates are not responsible for and expressly disclaim all warranties of any kind with respect to third-party content, products, and services. Evisions and its affiliates will not be responsible for any loss, costs, or damages incurred due to your access to or use of third-party content, products, or services. Evisions does not endorse the content or developer of any products or web sites mentioned.

All information in this guide is designed for instructional purposes only. Evisions makes no guarantees regarding the accuracy or performance of any techniques used in this guide. Software configurations and environments may vary, and some techniques used in this guide may not operate efficiently under all configurations. This guide may contain examples of various technologies or products, which are the sole property and responsibility of their creators.

Trademarks are the property of the respective owners for any products mentioned herein.

Table of Contents

- What's New in Argos 6.9?** 4
 - MAPS and Argos Updates 4
 - Product versions 4
 - Installation 5
 - 1. Prepare test environment and ensure current backup 5
 - 2. Check for updates 5
 - 3. Allow update process to complete 5
 - 4. Verify the latest version is installed 5
- Argos 6.9 Release Notes** 6
- Getting Help** 9
 - Can't find what you're looking for? 9

What's New in Argos 6.9?

Evisions is pleased to announce the release of Argos version 6.9, which includes the following changes:

Argos Enhancements:

- Improved memory performance for large data sets.
- Improved API support for 3rd party integrations.
- Added a Cancel or Continue Waiting option to the Web Viewer for exceeded read timeouts.
- Accessibility improvements.
- Additional enhancements.

Argos Resolved Issues:

- Enhanced the focus indicator when using a keyboard to navigate dashboard controls via keyboard.
- Objects being imported to an environment that is missing its former data connection were causing access violations.
- Various accessibility and stability improvements.
- Additional resolved issues.

MAPS Enhancements:

- Improvements to the Evisions DORIS Connector endpoints, allowing for larger amounts of data to be displayed in Argos.
- Provided access to alternate Evisions DORIS environments.
- Process improvements for authenticating to Evisions DORIS using tokens.
- Added support for IPv6.
- Additional enhancements.

MAPS Resolved Issues:

- Printing from simultaneously running schedules would cause MAPS to crash.
- Additional resolved issues.

We appreciate the feedback received from all of our users. Our products would not be what they are today without your continued support. If you have any comments or suggestions, please do not hesitate to [open a HelpDesk ticket](#) and let us know.

MAPS and Argos Updates

Some of the changes in this release require an update to MAPS as well as to Argos. We recommend upgrading both products to the latest versions concurrently.

Product versions

The latest versions of MAPS and Argos included in this release are:

- Argos mapplet 6.9.0.2079 / Argos client 6.9.0.2466 / Web Viewer 6.9.0.18
- MAPS service 6.9.0.2592 / MAPS Config 6.9.0.1429 / eLauncher 6.9.0.26

Installation

1. Prepare test environment and ensure current backup

We highly recommend installing updates in a test environment before applying them to your production environment. You should make sure that a current backup is available in case of any unforeseen issues. To create a full backup of your MAPS environment, go to the **Server -> Backups** screen in MAPS and click **Backup Now**.

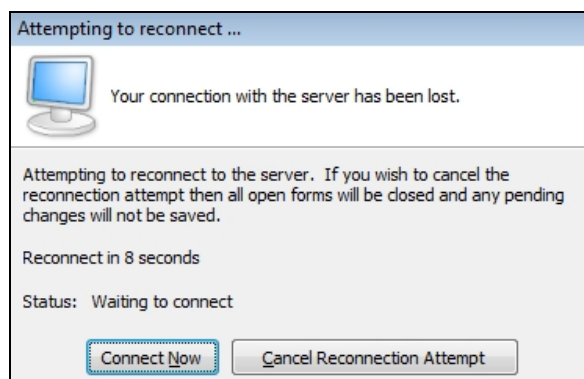
2. Check for updates

Click the **Check for Updates** button in the MAPS Config application to view available updates.

It is possible to apply updates when users are on the system; however, to avoid the possibility of losing unsaved work we recommend applying updates during off hours.

3. Allow update process to complete

When applying updates to the MAPS service you will be temporarily disconnected from the server:



The update process may take a few minutes to complete. **Do NOT cancel the reconnection attempt or manually restart the server.** You will automatically be reconnected to the server once the update has been applied.

4. Verify the latest version is installed

To ensure that you are on the most current version, continue clicking the **Check for Updates** button and applying the updates until no new updates are available.

Please Provide Us with Your Feedback!

As always, we welcome any [feedback or suggestions](#) you may have. We very much appreciate your thoughts and suggestions, so please keep the great ideas coming!

Argos 6.9 Release Notes

Argos Mapplet 6.9.0.2079 / Argos Client 6.9.0.2466 / Web Viewer 6.9.0.18
MAPS Service 6.9.0.2592 / MAPS Config 6.9.0.1429 / eLauncher 6.9.0.26

Argos

Enhancements

Area	Description	Issue number
Accessibility	Improved tabbing via keyboard and streamlined arrow key navigation in the Web Viewer.	AR-7315
Accessibility	Improved keyboard and screen reader accessibility of the OLAP toolbar.	AR-7314
Accessibility	Data-aware dashboard objects in the Web Viewer will now inform screen reader users when their content has changed.	AR-7184
Accessibility	Improved Web Viewer focus behavior when making selections in the dashboard toolbar via keyboard.	AR-6287
Accessibility	When a dialog is closed in the Web Viewer, focus now returns to the control that was focused on the previous window.	AR-6283
Accessibility	Improved accessibility in the Web Viewer for search result sorting in column headers.	AR-6154
Accessibility	Improved tab order of fields on the Web Viewer login screen.	AR-5364
Accessibility	Added keyboard accessibility to the Select a Connection dialog received when running a DataBlock without an assigned connection in the Web Viewer.	AR-5023
Accessibility	Improved focus indicator visibility for several dashboard objects in the Web Viewer.	AR-4958
AWV	Improved the UI for DataBlocks that have no existing data connections in the Web Viewer.	AR-7528
AWV	CDN build versions are now included in the Help > About section of the Web Viewer.	AR-7527
AWV	Added hover text for truncated explorer tree rows in the Web Viewer.	AR-7471
AWV	Improved font uniformity between the eLauncher and the Web Viewer.	AR-6147
AWV	Added a Cancel Operation or Continue Waiting dialog to the Web Viewer for exceeded read timeouts.	AR-1060
Charting	Standard charts are now the default when selecting a chart type.	AR-7491
Dashboards	Improved memory consumption when rendering a multi-column list box.	AR-5119
DORIS Data Connections	Snapshot definitions are now required when running an Evisions DORIS query in Argos.	AR-7536
Form Design	Date fields within multi-column list boxes in the Argos client can now be filtered using operators other than the equals sign.	AR-3951
Usability	Increased the contrast of error message text in a few areas of the web viewer.	AR-6161
Usability	Connection Pool was renamed to "Connection Group" for all hover text, titles, and data connection dialogs.	AR-7511
User Interface	Renamed the DataBlock "Commit" button to "Save".	AR-6746

Resolved Issues

Area	Description	Issue number
Accessibility	Default connections that were connection groups in the Web Viewer Data Connection drop-down were not accessible via keyboard.	AR-7521
Accessibility	Improved the contrast error message text in the Web Viewer.	AR-6806
Accessibility	Copying and pasting a folder in the Web Viewer OLAP Dimension Editor tree was producing an error on certain browsers.	AR-6307
Accessibility	Added alt text to DataBlock, folder, and collapsed folder ellipses icons in the Web Viewer.	AR-5124
Accessibility	Accessibility improvements for the DataBlock connection fields in the Web Viewer.	AR-5096
Accessibility	Accessibility improvements for Dashboard buttons in the Web Viewer.	AR-5048
Argos Client	Renaming a multi-column list box, and then selecting a different object without first hitting Enter was causing an Invalid Index error and an unexpected outline of the multi-column list box to appear.	AR-6336
AWV	DataBlock data connections that had a change in authorization were still being displayed as the default connection in the Web Viewer.	AR-7530
AWV	When there are no connection groups available for a given data connection in the Web Viewer, attempting to select the very first connection in the list using the keyboard resulted in an error.	AR-7524
AWV	The connection group icon was missing when the default DataBlock connection in the Web Viewer was a connection group.	AR-7520
AWV	Made contrast improvements to the Web Viewer Dashboard UI.	AR-7474
AWV	Multi-column list boxes in the Web Viewer that were filtered using the "contains" operation against a column that was using integer values were receiving an error message.	AR-7463
AWV	Pressing the Back button or Escape key before a DataBlock finishes loading was resulting in a error.	AR-7456
AWV	Selecting the Edit button via keyboard in the Dimension Editor would sometimes cause the screen to misalign and the Cancel button to not respond.	AR-7320
AWV	Changing the order of search results appended unnecessary text to the search results section headers in the Web Viewer.	AR-7285
Dashboards	The Custom Color picker dialog was becoming hidden behind other windows when unfocused, and was remaining hidden even when refocused.	AR-7503
Dashboards	Improved error messaging for situations where Argos reaches its memory consumption limit.	AR-5109
DataBlocks	Editing the text property of on edit box on the DataBlock Form Designer before modifying anything else, and then selecting outside of the edit box would cause an Invalid Index error to occur.	AR-7439
Data Connections	Access violations were being produced for objects being imported to environments where the previously selected data connection was no longer present.	AR-7499
Searching	Performing a search, reordering the search results, and then performing another search resulted in the sort order and sort indicator being mismatched in the Web Viewer.	AR-7578
Searching	Sorting search results via the column header in the Web Viewer would sometimes require multiple attempts.	AR-6155
Variables	SQL Variables with a data connection override were failing to validate after being exported/imported to a new environment.	AR-7557

Enhancements

Area	Description	Issue number
Configuration	Added a new maximum value of 5 hours, or 18,000 seconds, to the Client Read Timeout registry.	MAPS-1309
Configuration	Renamed all references of "MAP Server" to "MAPS".	MAPS-1127
Configuration	Added the Custom Image Alt Text field to the Launch Page section of MAPS Config.	MAPS-1412
Database	Database migration has been removed from MAPS Config.	MAPS-3226
Data Connections	MAPS now stores the refresh_token_expires_in property when authenticating an Evisions DORIS connection.	MAPS-3264
eLauncher	The eLauncher favicon has been changed to a local server resource in order to reduce certificate issues within browsers.	MAPS-3162
PostgreSQL	Upgraded .dll files in order to support newer versions of PostgreSQL for clustered environments.	MAPS-3306
Server	The default CDN URL has been updated to reflect an accurate hostname.	MAPS-3265
Support	Added additional support for IPv6 for improved network availability.	MAPS-2156
Usability	Renamed "Connection Pool" to "Connection Group".	MAPS-1068

Resolved Issues

Area	Description	Issue number
Scheduling	Running simultaneous schedules that were attempting to print would sometimes cause MAPS to crash.	MAPS-3242
XQP	XQPs were unintentionally staying open after their parent process had closed.	MAPS-3274
XQP	Dashboards being opened without any SQL execution in the Web Viewer were causing the XQP to remain open and reused throughout the session.	MAPS-3258

Getting Help

For information on using the software, please refer to the product Help, which contains detailed information on all aspects of the product.

If you are having problems with the installation or configuration, you can search our [support site](#), which includes a knowledge base of common issues. If you are unable to find the solution, submit a HelpDesk request with a detailed explanation of the problem you are experiencing.

Please do not hesitate to contact the Evisions HelpDesk if any questions or problems arise. We are here to help you and want to ensure your success.

Can't find what you're looking for?

We would love to make our documentation better! If you have a moment to let us know what we missed or how we can make the help more useful, please email us at TechDocs@evisions.com.